
FRONTLINE TEST SYSTEM™

SETUP AND QUICK START GUIDE

ETHERNET COMPROBE®

Copyright © 2000-2010 Frontline Test Equipment, Inc. All rights reserved. You may not reproduce, transmit, or store on magnetic media any part of this publication in any way without prior written authorization of Frontline Test Equipment, Inc.

FTS, Frontline, Frontline Test System, and ComProbe are registered trademarks of Frontline Test Equipment, Inc. FTS4BT is a trademark of Frontline Test Equipment, Inc.

All other trademarks and registered trademarks are property of their respective owners.

Instructions Contained In This Quick Start Guide

This Quick Start Guide contains setup information for using Frontline's Ethernet ComProbe. The Ethernet ComProbe works with Frontline's Ethertest™ software and NetDecoder™ software.



Figure 1- Ethernet ComProbe

In order to use the Ethernet ComProbe with either the Netdecoder or Ethertest software, you need to following these steps;

1. Install the Ethertest or NetDecoder software
2. Install WinPcap
3. Install the drivers for the Ethernet ComProbe
4. Configure the Ethernet ComProbe

This Quick Start Guide contains information on these four steps.

Minimum System Requirements

- * PC with Windows XP (Service Pack 2 or higher), Windows Vista (32-bit/64-bit) or Windows 7 (32-bit/64-bit)
- * RAM Requirements: 1GB minimum, 2GB recommended
- * 50 MB free Hard Disk Space (for the analyzer software)
- * One USB 2.0 Port
- * Maximum data rate supported is dependent on PC processor speed and RAM memory

Table of Contents

Instructions Contained In This Quick Start Guide	ii
Minimum System Requirements	iii
Introduction	1
Installation Instructions	2
Software Installation (Ethernest or NetDecoder)	2
Install WinPcap	2
Ethernet ComProbe Driver Installation (NetDecoder or Ethernest already installed)	5
Configure Ethernet ComProbe	9
Win 7 Installation	12
Initial Software Startup	18
Using NetDecoder software with the Ethernet ComProbe	18
Using Ethernest software with the Ethernet ComProbe	19
Technical Support	20

Table of Figures

<i>Figure 1- Ethernet ComProbe</i>	<i>ii</i>
<i>Figure 2 - Ethernet ComProbe Analyzer</i>	<i>1</i>
<i>Figure 3 - Install WinPcap</i>	<i>2</i>
<i>Figure 4 - WinPcap Welcome</i>	<i>2</i>
<i>Figure 5 - First Wizard Dialog</i>	<i>3</i>
<i>Figure 6 - License Agreement</i>	<i>3</i>
<i>Figure 7 - Installation Options</i>	<i>4</i>
<i>Figure 8- Installation</i>	<i>4</i>
<i>Figure 9 - Installation Complete</i>	<i>5</i>
<i>Figure 10 Install Wizard Welcome</i>	<i>5</i>
<i>Figure 11 Found New Hardware Wizard Dialog</i>	<i>6</i>
<i>Figure 12- Browse</i>	<i>6</i>
<i>Figure 13 - Directory Structure</i>	<i>7</i>
<i>Figure 14 Select File Location Dialog</i>	<i>7</i>
<i>Figure 15 Hardware Installation</i>	<i>8</i>
<i>Figure 16 Installation Continuing</i>	<i>8</i>
<i>Figure 17 Installation Complete</i>	<i>9</i>
<i>Figure 18- Network Connections</i>	<i>9</i>
<i>Figure 19- LAC Properties</i>	<i>10</i>
<i>Figure 20 - Properties Dialog</i>	<i>10</i>
<i>Figure 21 - Select Properties</i>	<i>10</i>

Figure 22 - Properties Dialog11
Figure 23 - IP Address11
Figure 24 - Device Manager.....12
Figure 25- Update Driver Software13
Figure 26 - Browse my computer for driver software13
Figure 27- Update Driver Software14
Figure 28 - Browse for Folder.....14
Figure 29 - Browse for driver software on your computer.....15
Figure 30 - Software Loading - Win715
Figure 31- Windows Security Warning16
Figure 32 - Installation Complete.....16
Figure 33 - Device Manager.....17
Figure 34 - Choose Protocol to Analyze18

Introduction

Welcome to Frontline Test Equipment's Ethernet ComProbe. The Ethernet ComProbe is an Ethernet tap device that can passively capture Ethernet data without the need for managed switches and/or making complex changes to network configuration.

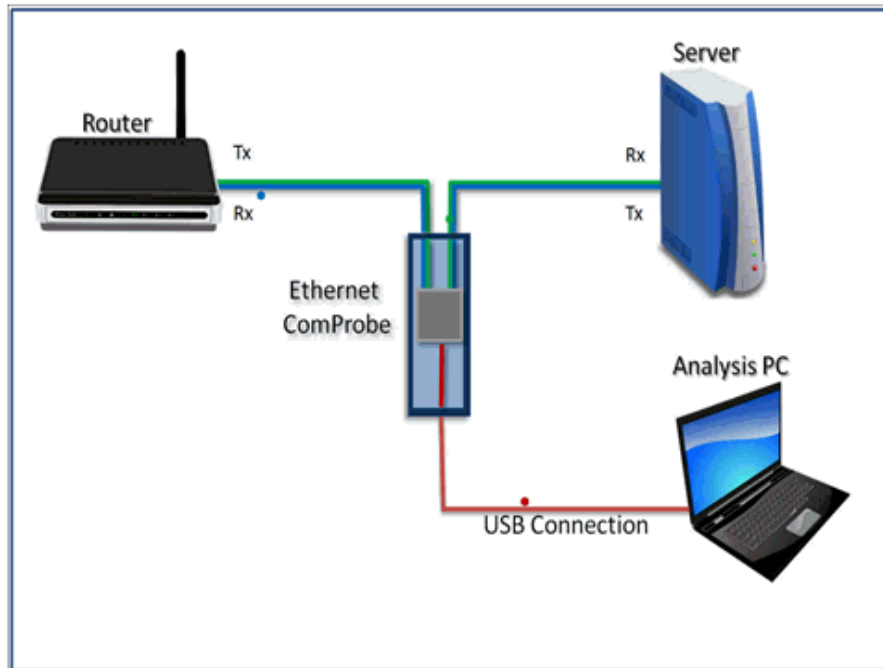


Figure 2 - Ethernet ComProbe Analyzer

As shown in the figure above, the Ethernet ComProbe, aggregates bi-directional traffic on the Ethernet wire and sends the packets to the analysis PC via USB. The Ethernet ComProbe can be used with either Ethertest or NetDecoder software analyzer.

We designed the online Help System with complete explanations and easy to use systematic instructions. Access the online Help by choosing Help Topics from the Help menu, or by pressing the F1 key on any window.

To access the PDF version of this Quick Start Guide from your Windows operating system, click *Start | Programs | Frontline [Ethertest or NetDecoder] [version#] | Set up | Ethernet ComProbe Quick Start Guide*

Installation Instructions

Software Installation (Ethernest or NetDecoder)

The Ethernet ComProbe can be used with either Ethernest or NetDecoder. Please refer to the installation and activation instructions in **Installing, Activating, and Managing Frontline Test System (FTS) Products** in the installation folder.

Install WinPcap

After you install the Ethernet ComProbe, you must install WinPcap. The Ethernet ComProbe will not work without WinPcap installed. If you have WinPcap already installed, you must verify that it is version 4.1.1 or newer.

1. Select *Install WinPcap* from the [NetDecoder or Ethernest] Setup folder.

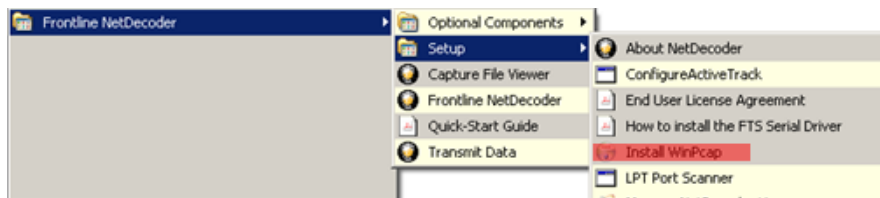


Figure 3 - Install WinPcap

The *Welcome* dialog appears.

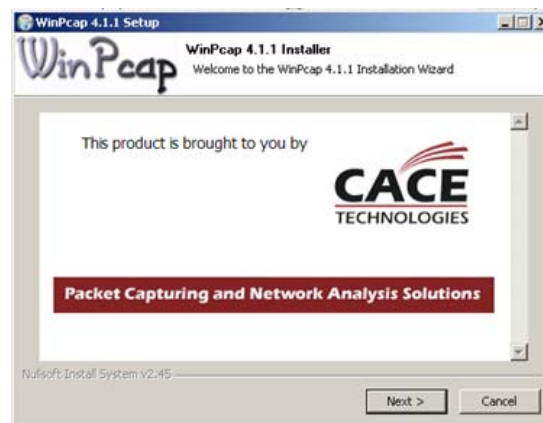


Figure 4 - WinPcap Welcome

1. Select *Next* to continue.

The first setup dialog appears.

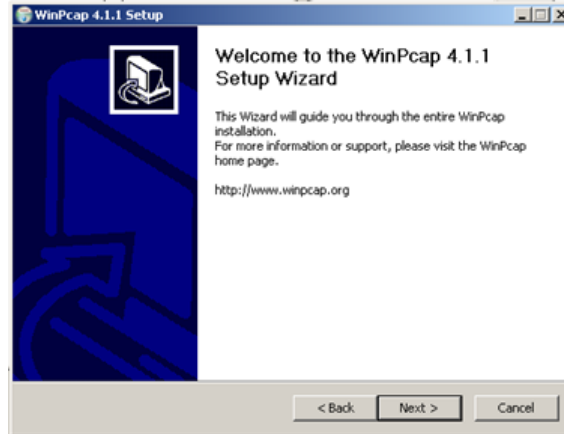


Figure 5 - First Wizard Dialog

2. Select *Next* to continue.

The *License Agreement* dialog appears.



Figure 6 - License Agreement

3. Select *I agree* to continue.

The *Installation Options* dialog appears.

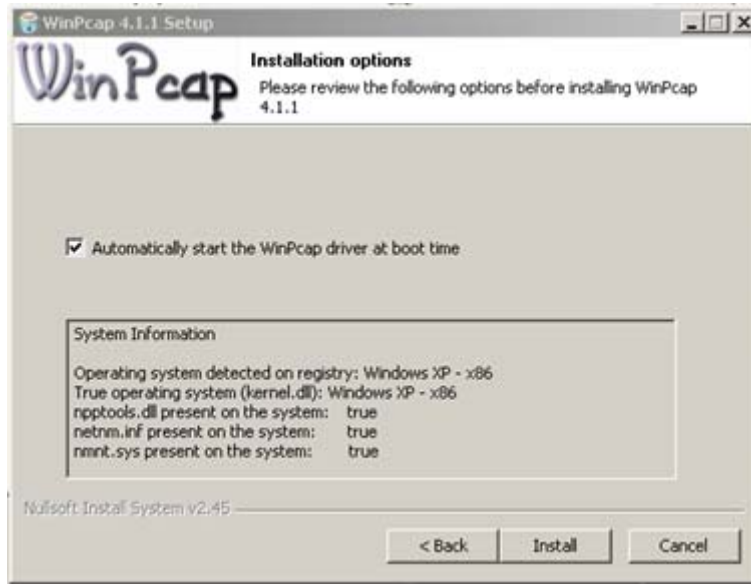


Figure 7 - Installation Options

4. Make sure that the *Automatically start the WinPcap driver at boot time* is selected.
5. Select *Install*.

The installation continues.

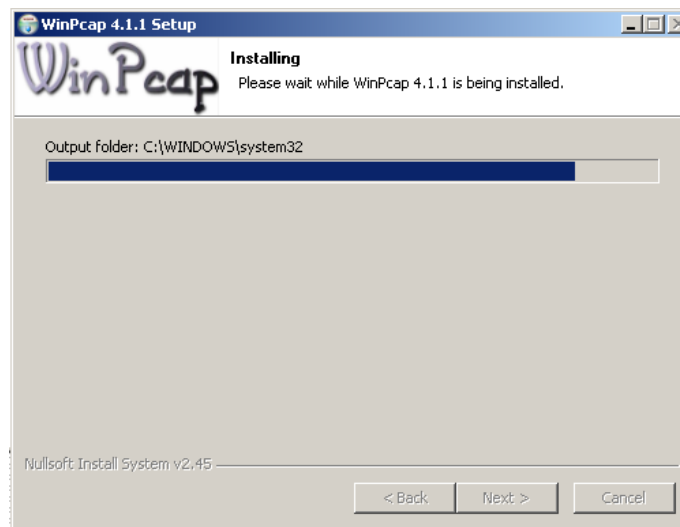


Figure 8- Installation

6. When the installation is done, select *Finish* to close the dialog and complete the process.

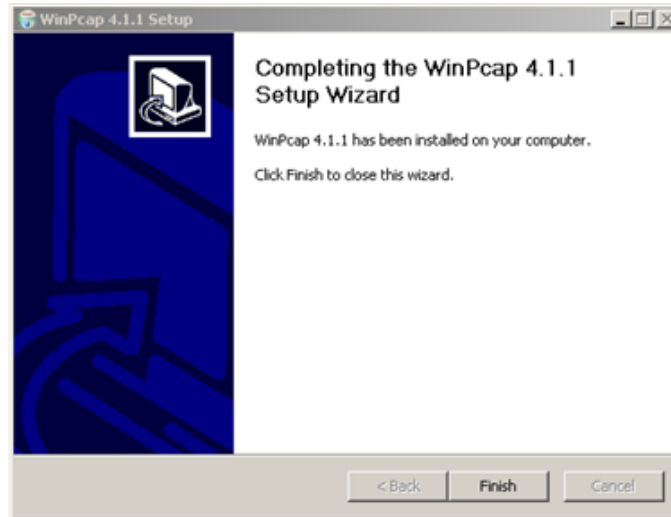


Figure 9 - Installation Complete

Ethernet ComProbe Driver Installation (NetDecoder or Ethertest already installed)

When first connecting the Ethernet ComProbe to your PC, you will be directed to install the required Frontline interface driver.

1. Connect the USB cable into the back of the Ethernet ComProbe .
2. Connect the *other end* to a USB port on the computer with NetDecoder installed.

The *Found New Hardware Wizard* dialogue box appears which may ask you if you want to connect to Windows Update to search for software.



Figure 10 Install Wizard Welcome

3. Choose *No, not this time* and click *Next*.

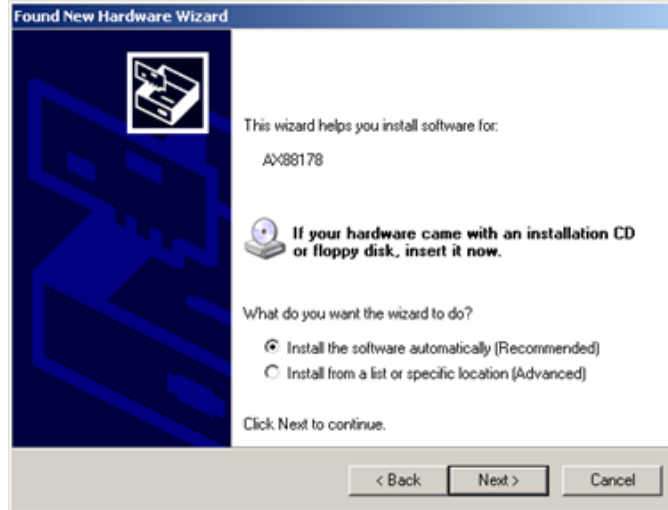


Figure 11 Found New Hardware Wizard Dialog

4. Choose *Install from a list or specific location* and click *Next*.

Now you have to locate the Ethernet ComProbe driver.

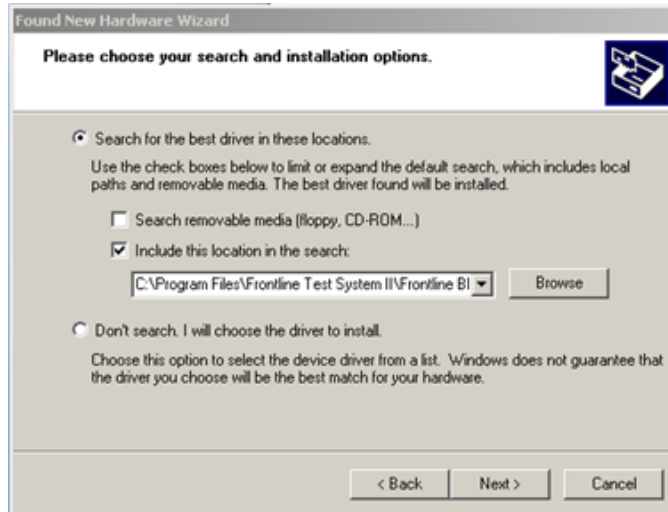


Figure 12- Browse

5. Make sure the *Include this location in the search* checkbox is selected, then click the *Browse* button.
6. Locate the directory where you installed NetDecoder (the default is *C:\Program Files\Frontline Test System II\Frontline NetDecoder [version #]\Drivers\Ethernet ComProbe*)

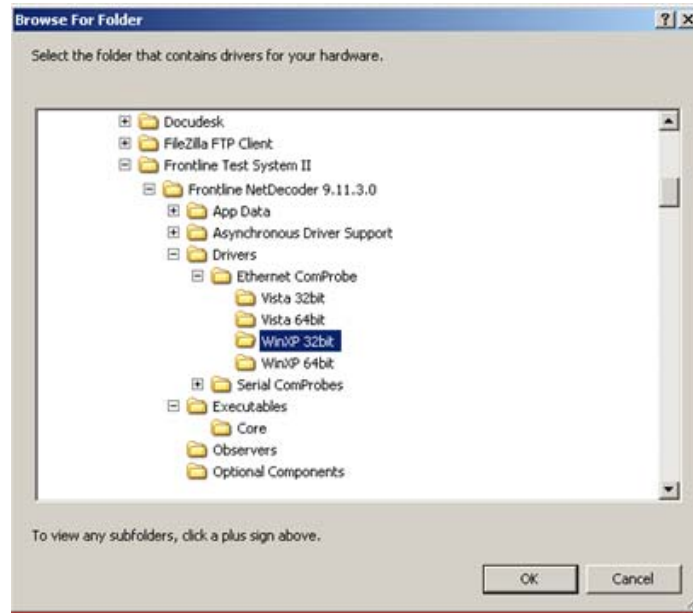


Figure 13 - Directory Structure

7. Select the directory among Vista 32bit, Vista 64bit, WinXP 32bit, or WinXP64bit and click *OK*.

8. Click the *Next* button to finish the installation.

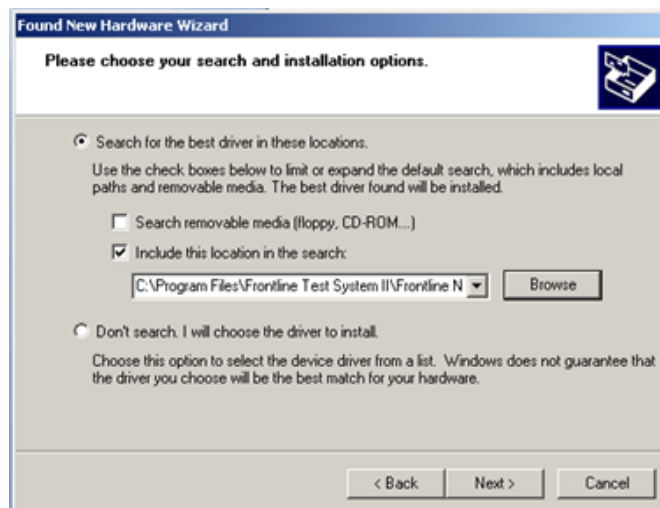


Figure 14 Select File Location Dialog

9. If you get a dialog box like the one below, don't worry—click *Continue Anyway*.



Figure 15 Hardware Installation

Your computer will now install the Ethernet ComProbe driver from the directory you selected.

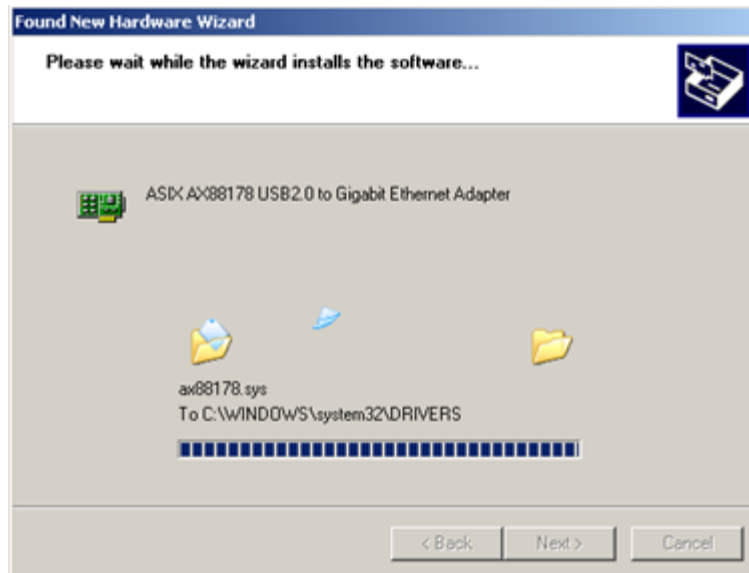


Figure 16 Installation Continuing

You'll get a dialog box saying that the installation is finished.

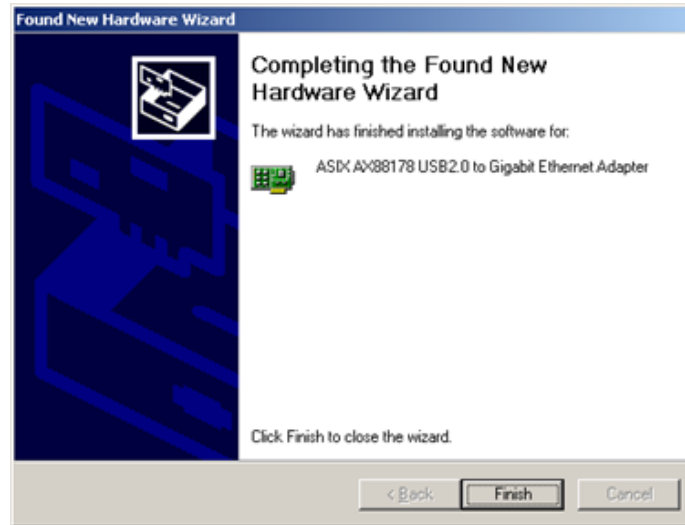


Figure 17 Installation Complete

10. Click the *Finish* button to close the wizard.

The installation of the Ethernet ComProbe driver is now complete.

Configure Ethernet ComProbe

After you install the driver for the Ethernet ComProbe, you have to configure the IP address and Subnet Mask for the Ethernet ComProbe.

1. Select *Network Connections* from the Control Panel.



Figure 18- Network Connections

2. Right click on the Local Area Connection (LAC) for the Ethernet ComProbe and select Properties.

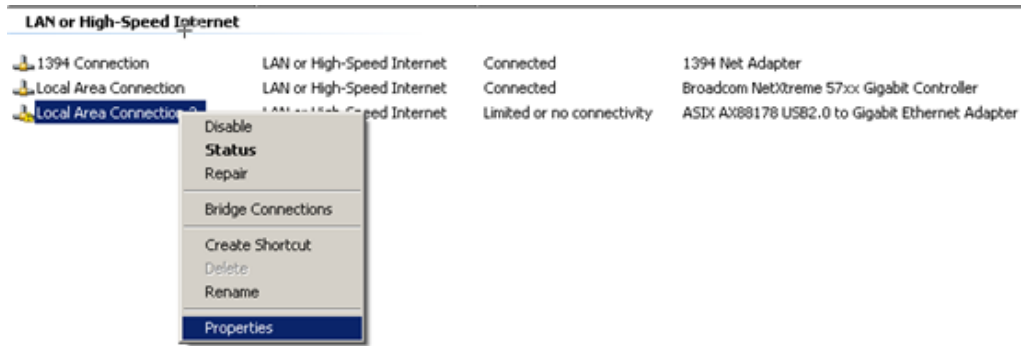


Figure 19- LAC Properties

The LAC Properties dialog appears.

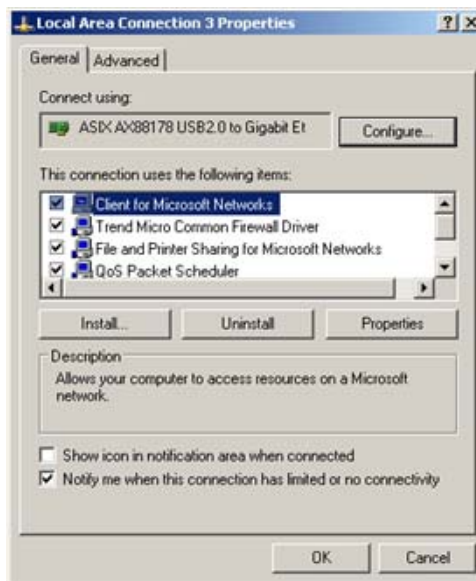


Figure 20 - Properties Dialog

3. Scroll down and select *Internet Protocol (TCP/IP)*.
4. Select *Properties*.

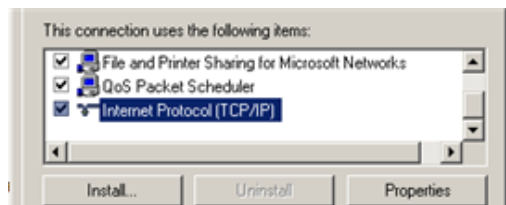


Figure 21 - Select Properties

The Properties dialog appears.

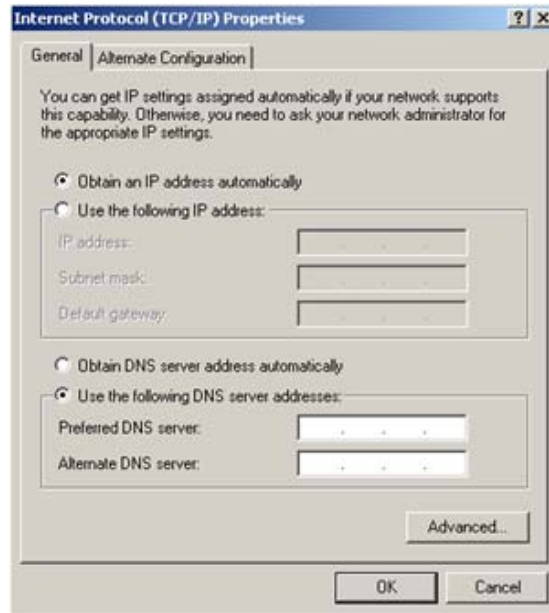


Figure 22 - Properties Dialog

5. Select the *Use the following IP address* radio button.



Figure 23 - IP Address

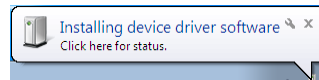
6. Enter *192.168.0.1* for the IP address.
7. Enter *255.0.0.0* in the Subnet mask.
8. Select *OK* to close the Properties dialog.
9. Select *OK* again to close the LAC Properties dialog and complete the process.

Note: The IP address and Subnet mask entered here are NOT visible on the network. This address and the Ethernet ComProbe itself is visible only to the applications running on the analysis PC.

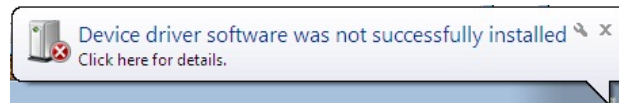
Win 7 Installation

The procedure for installing the Ethernet ComProbe driver is different for Win7 than it is for XP. Follow the steps below.

1. Plug the ComProbe into a USB port. The *Found New Hardware Wizard* dialogue box appears, then disappears.



Then a message similar to this one appears/disappears indicating that the driver software has not been installed.



When the dialog disappears,

2. Go to the Control Panel and open the *Device Manager*.

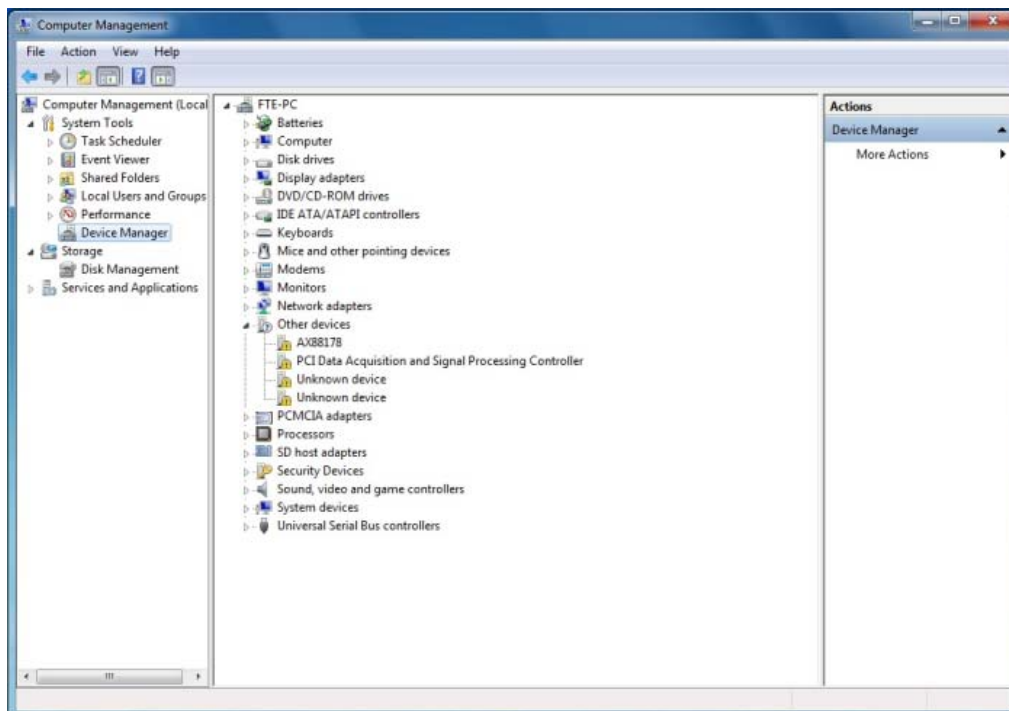


Figure 24 - Device Manager

3. Right click on *AX88178* under *Other Devices* and select *Update Driver Software*.

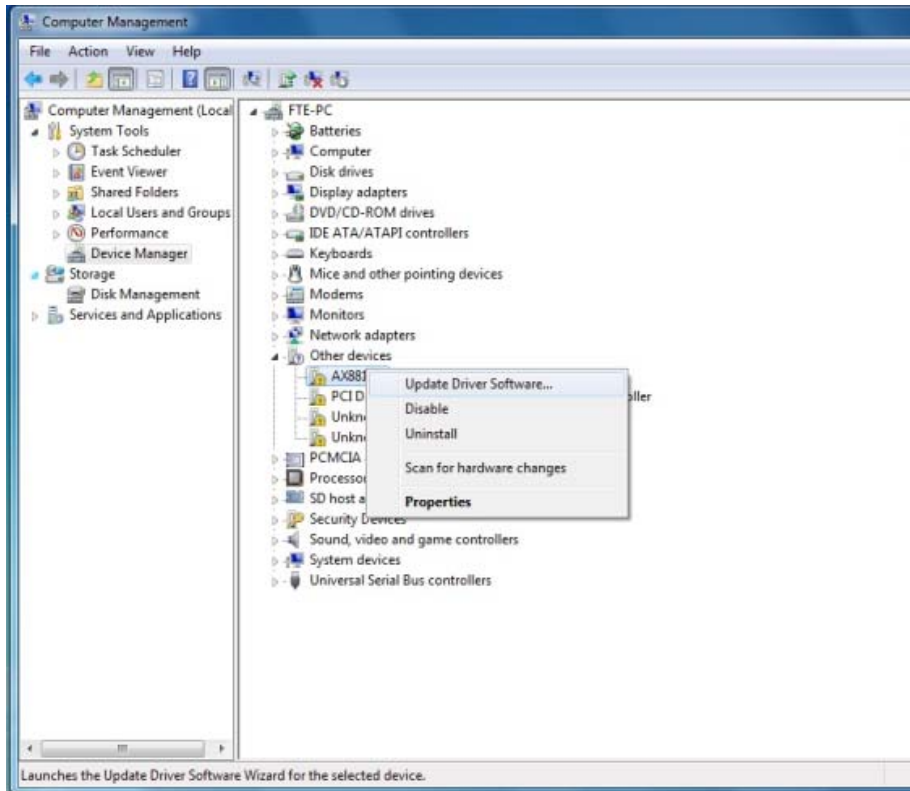


Figure 25- Update Driver Software

The next step is to choose the driver location.

4. Select *Browse my computer for driver software*.

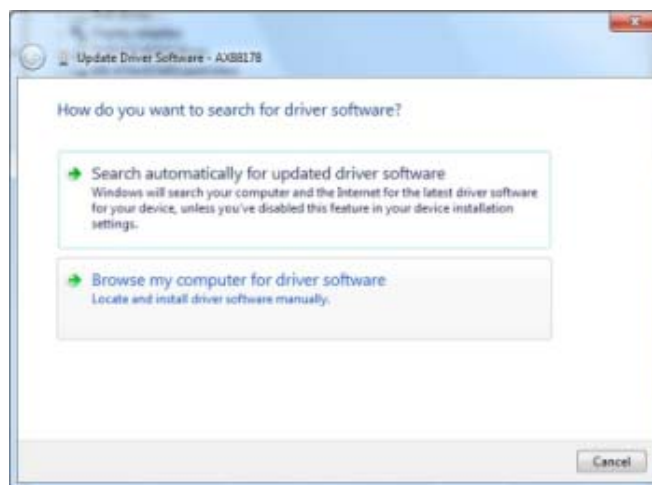


Figure 26 - Browse my computer for driver software

5. On the next dialog, select the *Browse* button.



Figure 27- Update Driver Software

Now you have to drill down to find the folder that contains the driver. The driver is located at:
Program Files[X86]\Frontline Test System II\Frontline [Application Name and #]\Drivers\Ethernet ComProbe\Vista 64bit

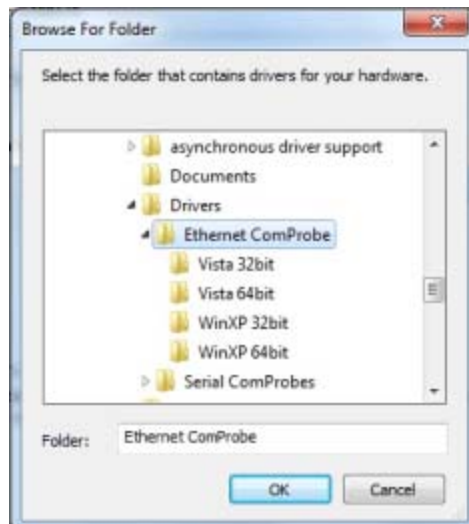


Figure 28 - Browse for Folder

6. Select the **Ethernet ComProbe** folder.
7. Select OK

The *Browse for driver software on your computer* dialog reappears.

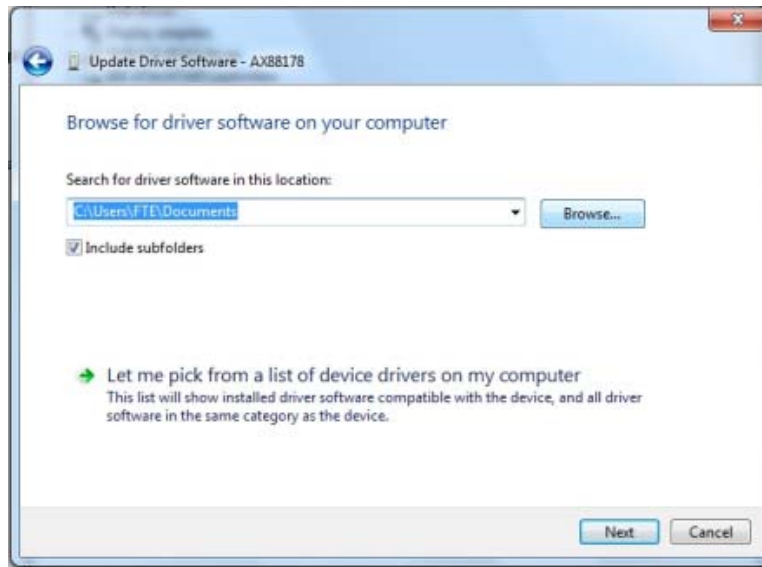


Figure 29 - Browse for driver software on your computer

8. Select **Next**.

Once the driver starts to load,

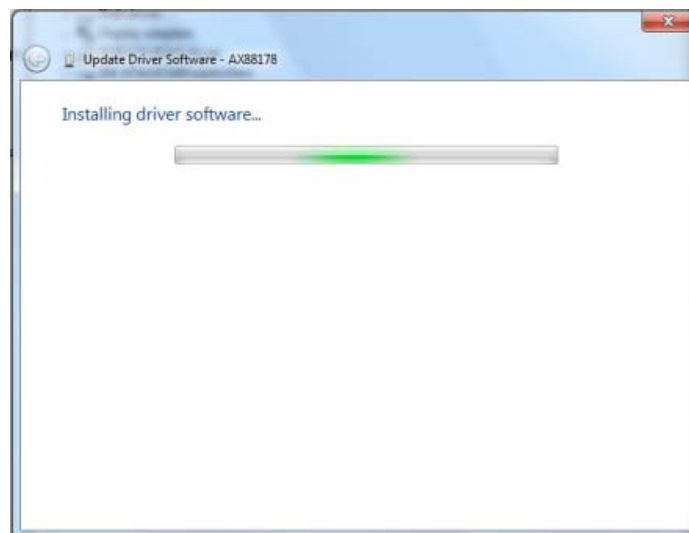


Figure 30 - Software Loading - Win7

you may get a Windows Security warning.

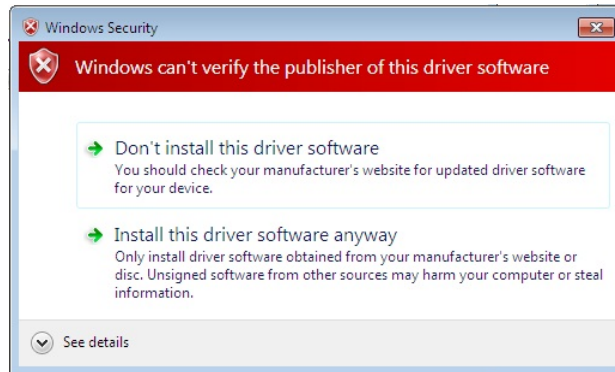


Figure 31- Windows Security Warning

9. You can ignore this warning by selecting **Install this driver software anyway**.

Your computer will now install the ComProbe driver from the directory you selected; you will get a dialog box saying that the installation is finished.



Figure 32 - Installation Complete

10. Click the *Close* button to close the wizard.

When you close this dialog you will see that the correct driver is displayed in the Device Manager under Network adapters.

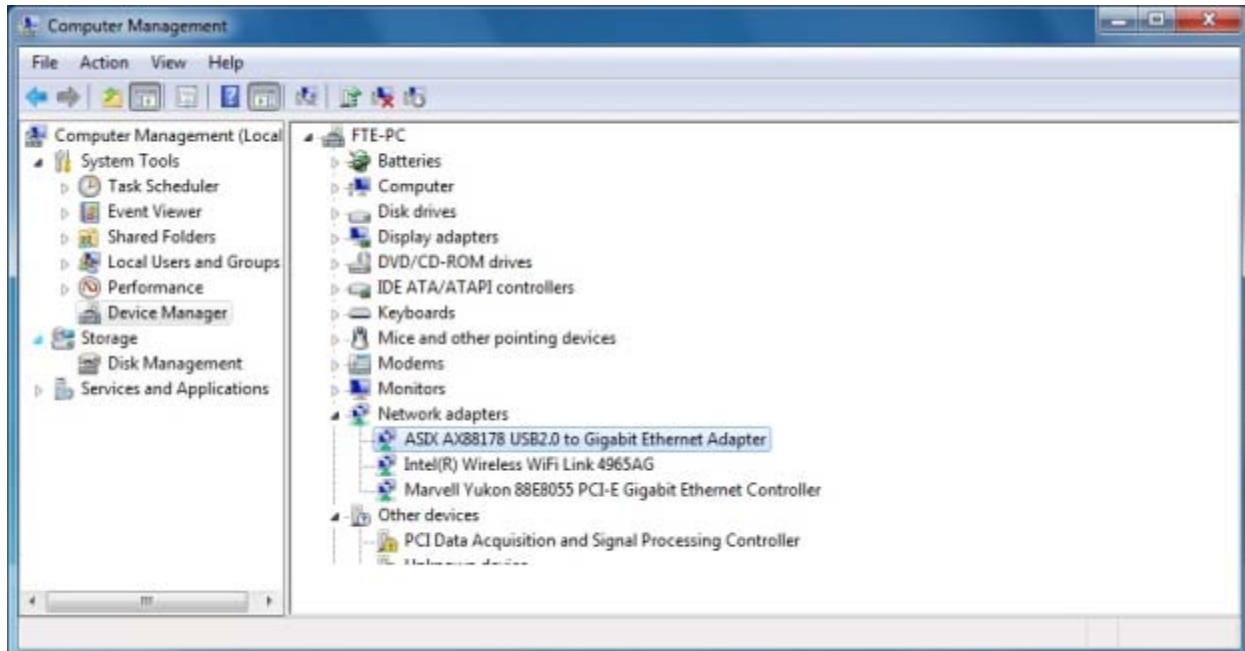


Figure 33 - Device Manager

Initial Software Startup

The installation of your FTS product creates a folder on your desktop.

Using NetDecoder software with the Ethernet ComProbe

The installation of your FTS product creates a folder on your desktop.

1. Open the desktop folder and double-click the shortcut labeled *Frontline NetDecoder*.
2. FTS displays the *Choose Protocol to Analyze* dialog that contains a list of the available protocols.
3. Expand the folder “Ethernet Analyzer” and select “Ethernet”.

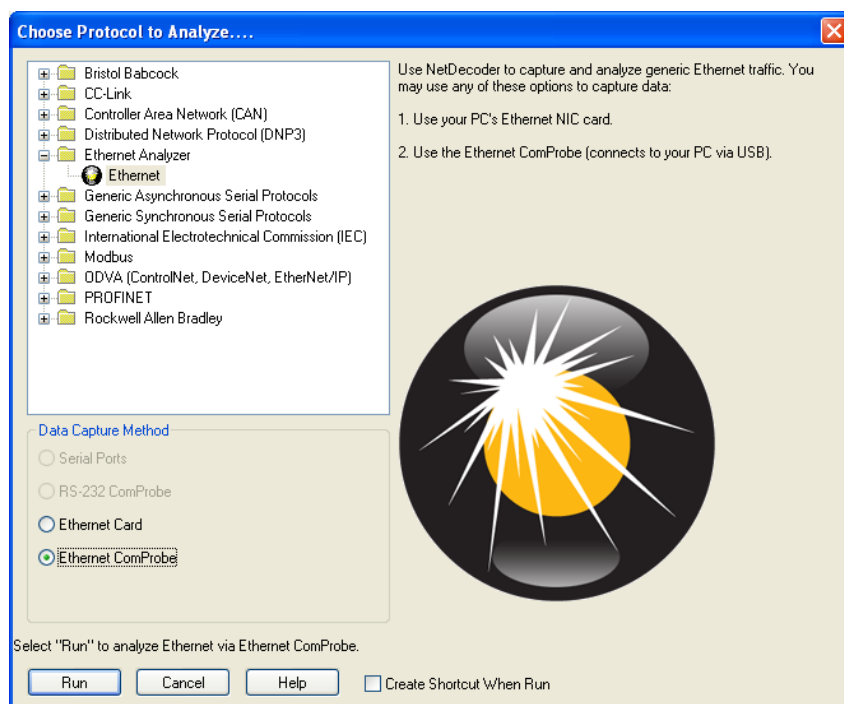


Figure 34 - Choose Protocol to Analyze

4. In the *Data Capture Method* selection pane below the list window, select the “Ethernet ComProbe” option.
5. Check the *Create Shortcut When Run* checkbox if you like and click the *Run* button (if you choose to create a shortcut, the system creates one and places it in the desktop folder).

Alternatively, you can access the *Choose Protocol to Analyze* dialog from your Windows operating system by clicking *Start | Programs | NetDecoder [version#] | Frontline NetDecoder*. Then select the protocol from the displayed list. Consult the online Help for additional information on choosing protocols.

You can view the Ethernet ComProbe configuration information in the Hardware Settings dialog by choosing *Options | Hardware Settings* from the Control window.

You can set Capture Filters in the I/O Settings dialog by choosing *Options | I/O Settings* from the Control window.

Using Ethertest software with the Ethernet ComProbe

The installation of your FTS product creates a folder on your desktop.

1. Open the desktop folder and double-click the shortcut labeled *Ethertest with Ethernet ComProbe*.

Alternatively, you can access the *Ethertest with Ethernet ComProbe* short cut from your Windows operating system by clicking *Start | Programs | Ethertest [version#] | Ethertest with Ethernet ComProbe*.

You can view the Ethernet ComProbe configuration information in the Hardware Settings dialog by choosing *Options | Hardware Settings* from the Control window.

You can set Capture Filters in the I/O Settings dialog by choosing *Options | I/O Settings* from the Control window.

That's all you need to do. You are now ready to begin capturing data.

Technical Support

Technical support is available in several ways. The online help system provides answers to many user related questions. Frontline's website has documentation on common problems, as well as software upgrades and utilities to use with our products.

Web: <http://www.fte.com>, click Support

Email: tech_support@fte.com

If you need to talk to a technical support representative, support is available between 9am and 5pm, U.S. Eastern time, Monday through Friday. Technical support is not available on U.S. national holidays.

Phone: +1 (434) 984-4500

Fax: +1 (434) 984-4505